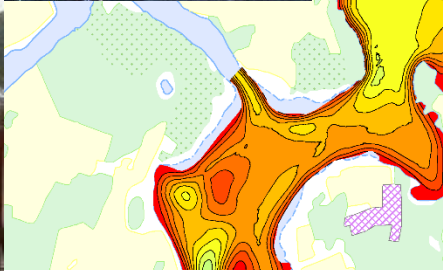


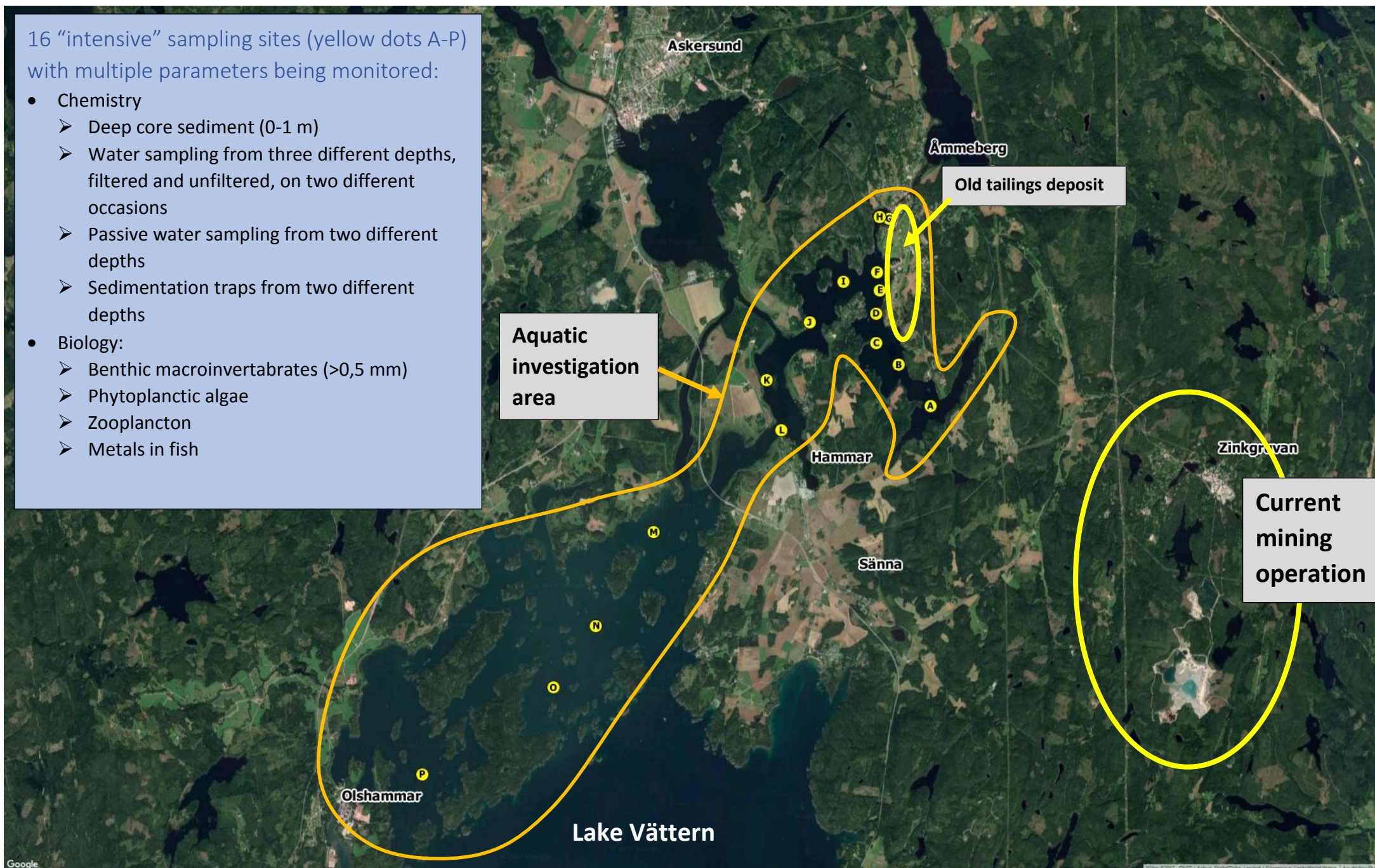
Åmmeberg aquatic survey 2017

- More than 1000 samples have been collected for analysis
- 10 weeks of field work spread out over 6 months
- Approximately 800 km of lake traveled

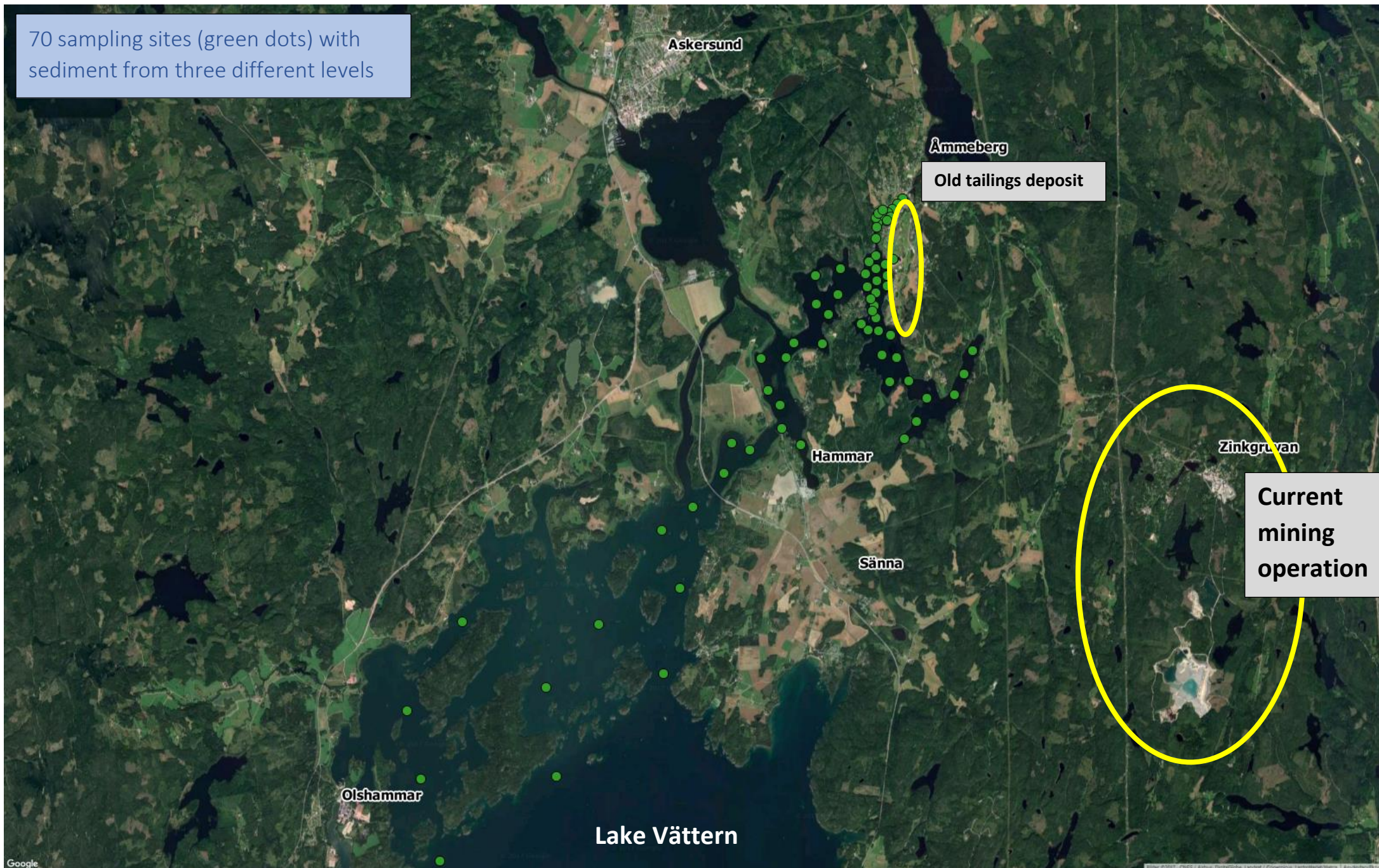


16 “intensive” sampling sites (yellow dots A-P) with multiple parameters being monitored:

- Chemistry
 - Deep core sediment (0-1 m)
 - Water sampling from three different depths, filtered and unfiltered, on two different occasions
 - Passive water sampling from two different depths
 - Sedimentation traps from two different depths
- Biology:
 - Benthic macroinvertebrates (>0,5 mm)
 - Phytoplanktic algae
 - Zooplankton
 - Metals in fish



70 sampling sites (green dots) with sediment from three different levels



Complementary investigations:

1. The whole sampling area sonar-mapped for depth and relative sediment hardness
2. Standardized net fishing in five areas
3. Metals in crayfish from four areas
4. Follow-up of a sediment leaching investigation from five sites (University of Örebro)

