



Setting the scene

From waste to resource

”The mine as a chapter in the story of the landscape”

Pia Lindström, HR&Sustainability Director
Boliden Mines
October 3, 2019

Fågelmýran 1924

The start of Boliden



45 mines started

31 in Västerbotten
3 concentrators

95 years of mine and
environmental knowledge

The Skellefteå region

1800

Employed

8960

Indirect jobs

12,5 %

Of the employment in
the municipality

Mining industry's impact on the environment and on the society

The land areas we claim

Water reservoirs

Tailings, storage and treatment

Ryllshyttan tailings storage

The landscape we impact

Short-term and long-term transformation



Kevitsa open-pit mine



Kedträsk closed mine

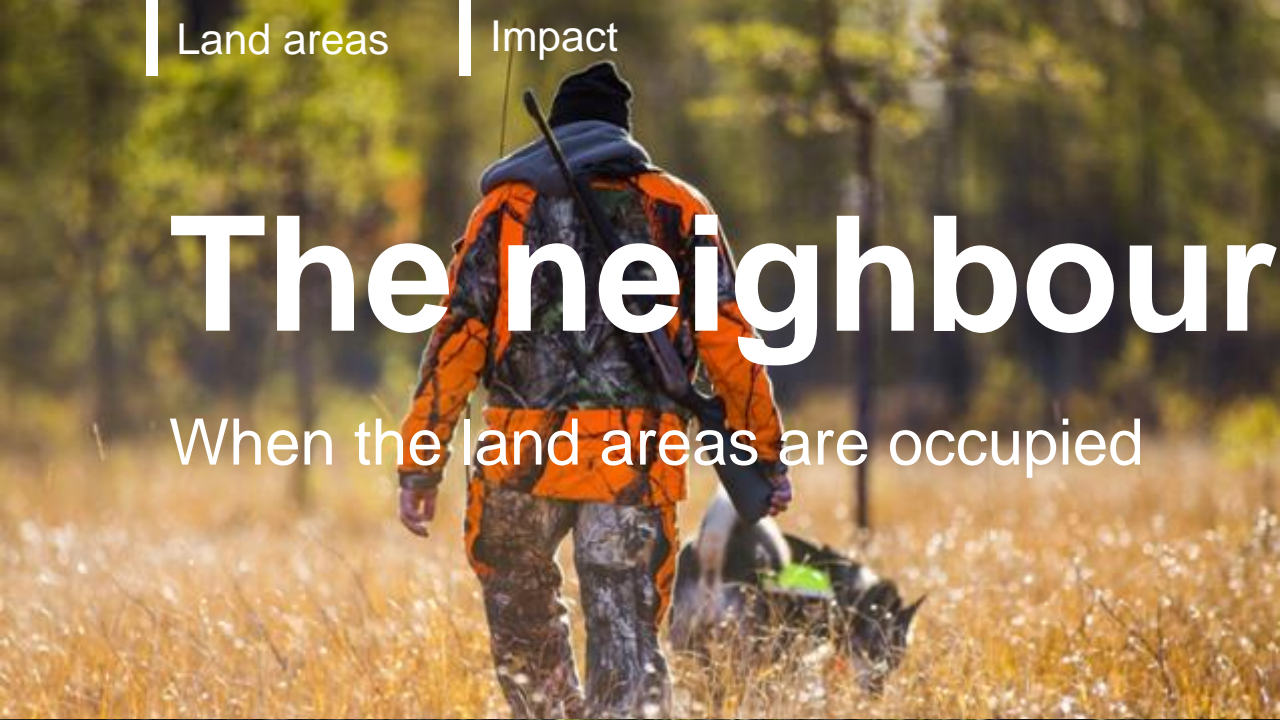
Land areas

Impact

BOLIDEN

The neighbours we affect

When the land areas are occupied



Technical reclamation

1970-2000



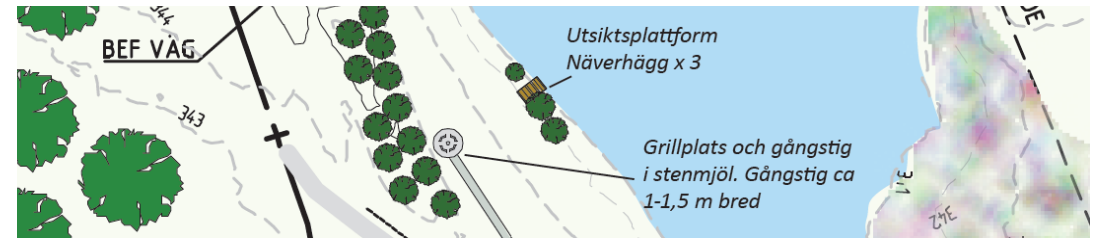
Ecological rehabilitation

2000



Mine closure plans include added value

2020



Technical solutions



What is the next step?

Challenges and opportunities



Deposition
techniques and
waste
management

Cost and
resource
efficiency at
closure

Waste to
resource

CSR, CO₂,
labeling of
metals

Climate change

Starts with responsible production of base metals

Wind



+300%

Increased demand of metals until
2050

Sun



+200%

Increased demand of metals until
2015

Batteries



+1000%

Increased demand of metals until
2050