

Mine Closure 2013

- Summary by Annika Bjelkevik



<https://www.mineclosure2013.com>

Tailings Consultants Scandinavia AB

Annika Bjelkevik
Lic. Tech. Tailings dams & M.Sc Civ. Eng
+46 (0) 706 – 022 086
annika.bjelkevik@tailings.se

Kungsgatan 37
111 56 Stockholm
SWEDEN
www.tailings.se

Datum: 130107
Uppdragsnummer: 101101-101

Program – Plenary Sessions Day 1

8.30 to 10.15	Opening Plenary in The Gallery Chair: Caroline Digby, Post-Mining Alliance
8.30	Welcome from Sir Tim Smit, Founder of the Eden Project
8.45	The challenges of achieving a positive legacy Aidan Davy, Deputy President and Senior Program Director, International Council on Mining & Metals
9.15	A global view of integrated closure and legacy planning Bill Adams, Chief Advisor - Areas Under Management, Rio Tinto
9.45	What will we be left with when you've gone? Samantha Hoe-Richardson, Head of Sustainable Development and Energy, Anglo American
10.15	Morning Break in The Gallery
11.00 to 12.30	Plenary in The Gallery Chair: Mark Tibbett, Cranfield University
11.00	European Union rules on mine closure Marianne Muller, European Commission, Directorate-General for Environment
11.30	Regulating mine closure: new approaches - The European Innovation Partnership on Raw Materials Mark Rachovides, President, Euromines
12.00	Creating the Eden Project Tony Kendle, Creative Director, Eden Project

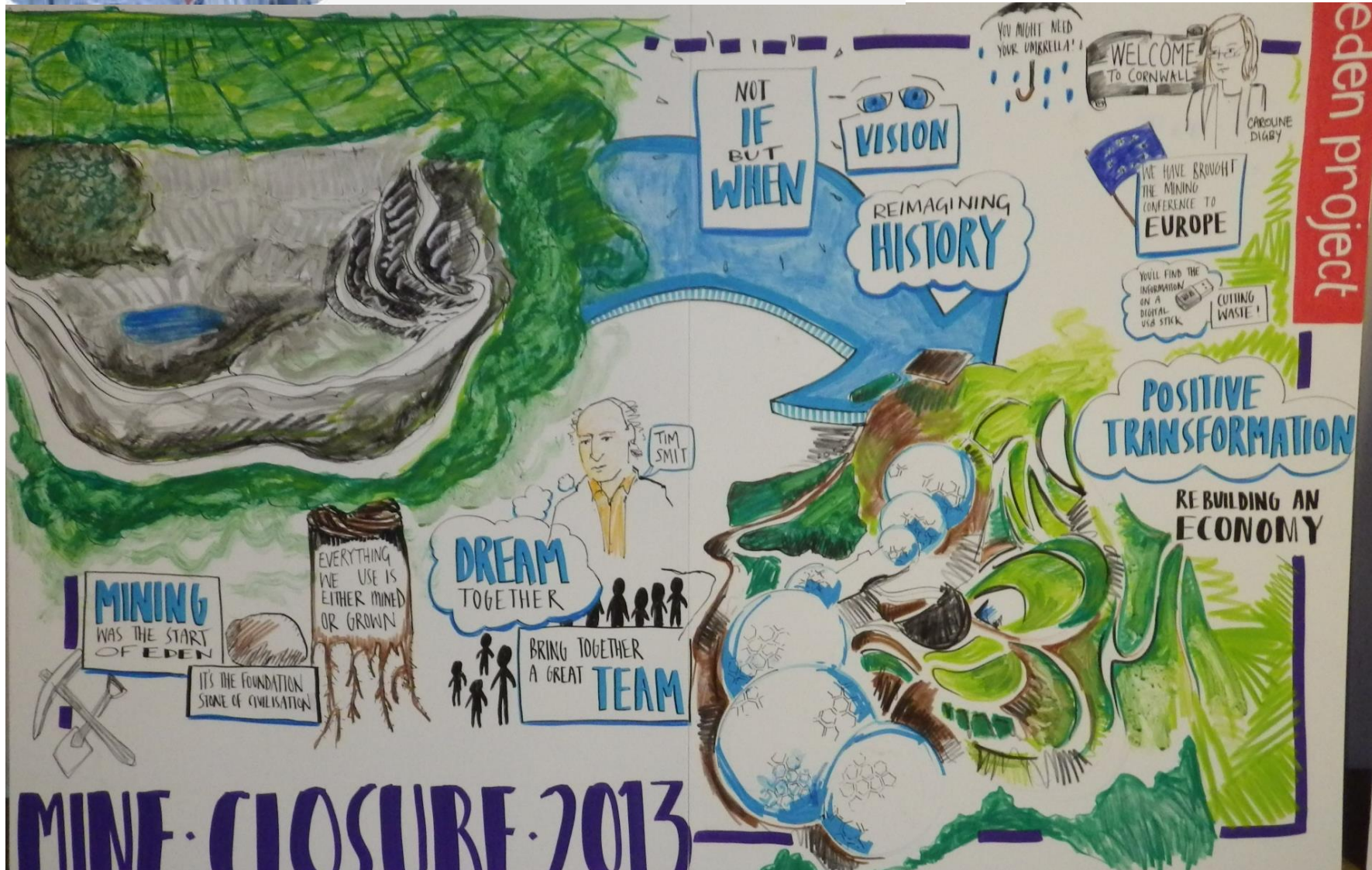


Sir Tim Smit KBE

Eden founder Sir Tim Smit talked about how Eden became a reality.

> Find out more about this speaker

Visual Notes

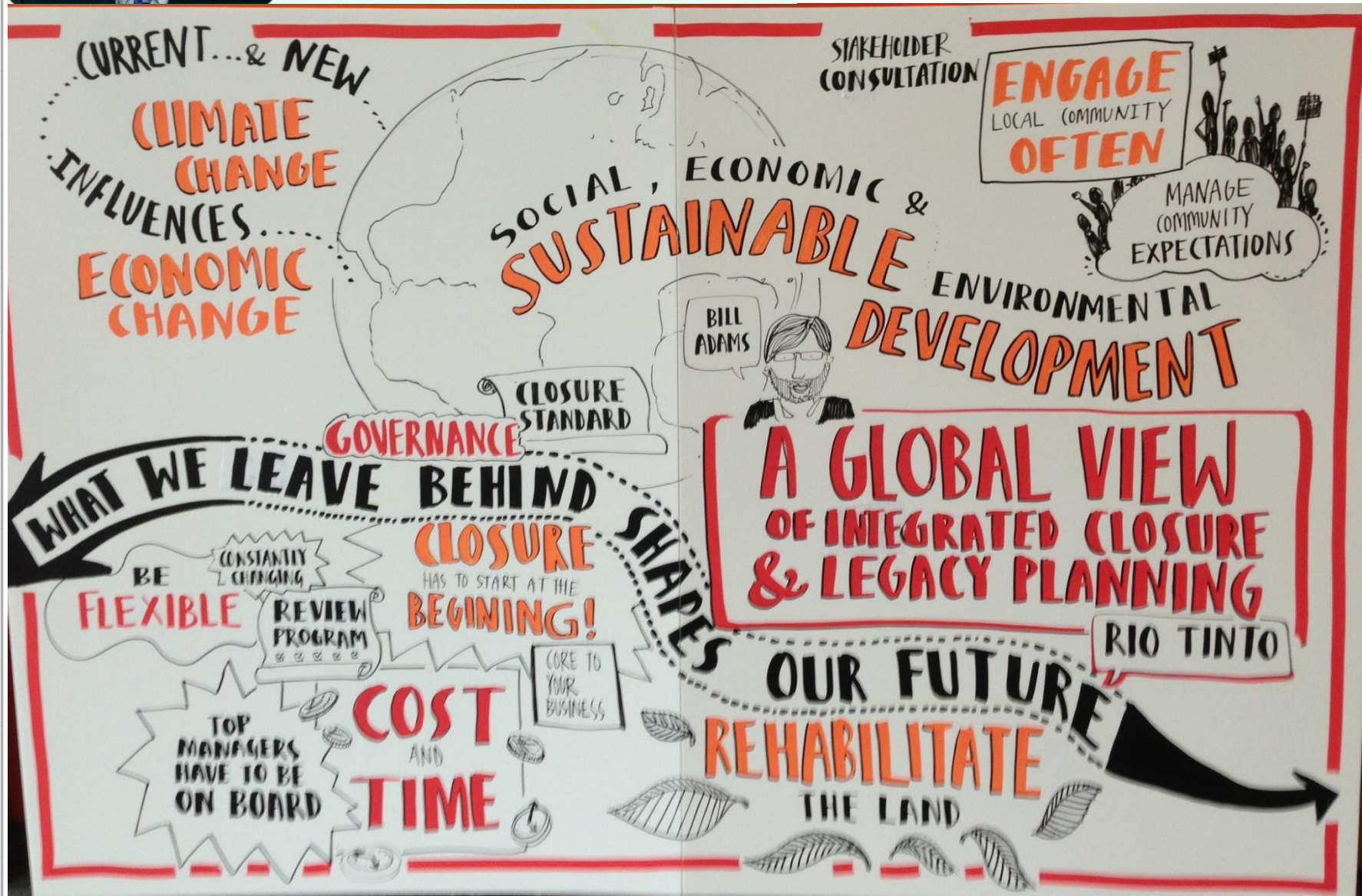




Bill Adams

Bill Adams is Chief Advisor of Areas under Land Management, at Rio Tinto. We are delighted to have Rio Tinto as our main sponsor following a decade of partnership with the Eden Project.

> Find out more about this speaker





Samantha Hoe-Richardson

Samantha Hoe-Richardson focussed on how Anglo American's updated mine closure toolkit works to reduce risks and optimise sustainable opportunities within the constraints of the environment, beyond the life of the mine.

> Find out more about this speaker





Marianne Muller

Marianne Muller joins us from the European Commission,
Directorate-General for Environment.

> Find out more about this speaker

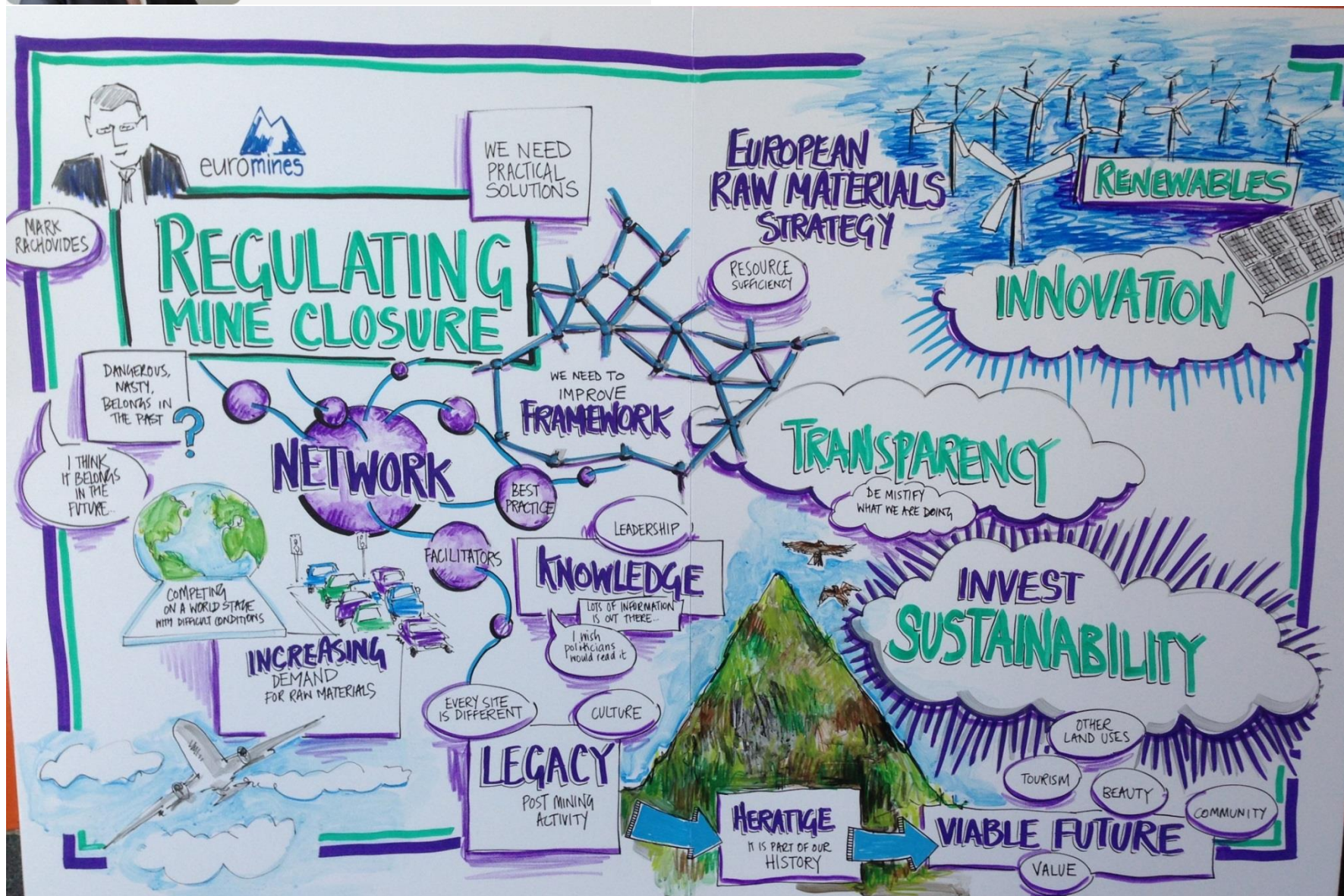




Mark Rachovides

As President of Euromines, Mark Rachovides will give an European perspective on regulating mine closure.

> Find out more about this speaker



Program – Plenary Sessions Day 2

14.00 to 15.30	Plenary in The Gallery Chair: Jeff Parshley, SRK Consulting
14.00	How new doors open when mines close - Examples from Germany Friedrich von Bismarck, Joint Governmental Agency for Coal Mine Rehabilitation
14.30	From environmental liability to community asset: mined land reclamation T Allan Comp, Office of Surface Mining, U.S. Department of the Interior
15.00	Do we have to wait until 'post' mining to deliver community benefit? Euan Hall, Director, The Land Trust
15.55 to 17.30	Plenary in The Gallery Chair: Kate Harcourt, Independent
15.55	The session will start with an introduction to Mine Closure 2014 by Isabel Weiersbye, University of Witwatersrand, South Africa
16.00	Mine closure – misplaced planning priorities Daniel Limpitlaw, Centre for Sustainability in Mining and Industry, University of the Witwatersrand
16.30	The next generation of challenges for mine closure Luke Danielson, Sustainable Development Strategies Group
17.00	An ecologist in mining – a retrospective of 40 years in mine closure and reclamation Nick Coppin, formerly Wardell Armstrong International

Do we have to wait until 'post' mining' to deliver community benefit

The Land Trust is an independent Charitable Trust providing long-term sustainable management of open spaces across the United Kingdom.



- Aims**
1. To acquire and manage land, and work with local partners, to manage and promote sustainable and high quality green space.
 2. To work with partners to make a major contribution to wider regeneration and socio-economic development.



A view of a park is shown to raise house prices by 8%, and simply having a park nearby by 6%

The Value of Public Space, CABI Space

Northumberlandia

- A 46 acre community park the centrepiece of which is an iconic landform, Designed by Charles Jencks
 - 2 million tonnes of soil and clay
 - 400 metres long and up to 36 metres high
 - Takes 20 minutes to walk around
- Privately funded - no public money
- Future management funded via an endowment, commercial activity and grant funding.
- Over 100,000 visitors in year one.

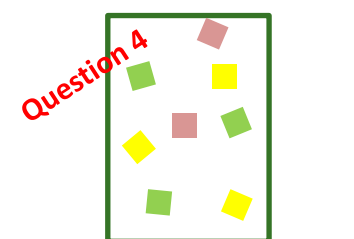
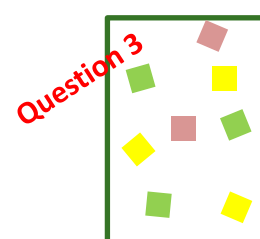
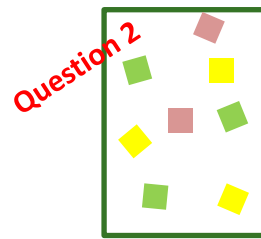
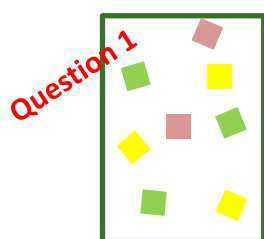
Program – Parallell sessions

- Challenges & New Approaches
 - Planning for Closure
 - Community & Social Issues
 - Regulatory, Financial & Legal Issues
 - Challenges in New Approaches
- Ecosystem Reconstruction & After Care (Plants & Landscape)
 - Geotechnics & Engineering
 - Geochemistry & Water Management

World Café (after noon)

Communication & Participation

14.00	World Café in The Gallery
	<p>An interactive session drawing on the big questions raised during the conference. This is an opportunity to discuss and draw out the key themes, issues and outcomes and identify priorities for the future. Everyone can have their say in a small group format. Opinions and ideas will be captured by the process and reported back to the floor so that participants can take away a clear vision from their week at Eden.</p> <p>Following the conference, a summary of these conversations will be produced and disseminated through the website and wider media. The intention will be to stimulate wider debate across the industry to ensure that closure is increasingly an integral part of the Life-of-Mine process.</p>



Ideas – changing perspective

- SveMin Miljökonferens (environmental conference)
 - Theme Closure, with invited speakers
- SveMin Miljökonferens (environmental conference)
 - Eden Project
- Study Tour with authorities (Germany, UK, ...)
- Landscaping – Landscape architects
- Samråd (meetings with authorities & stakeholders)

FIRST ANNOUNCEMENT AND CALL FOR PAPERS

[Click here to download Information Form](#)

MINE CLOSURE 2014

9TH INTERNATIONAL CONFERENCE ON MINE CLOSURE

1-3 October 2014, Sandton Convention Centre, Johannesburg, South Africa

www.mineclosure2014.com / info@mineclosure2014.com / www.saconvention.co.za



[CLICK HERE FOR
MINE CLOSURE PROCEEDINGS](#)

WELCOME TO MINE CLOSURE 2014 IN AFRICA

Theme:

Transforming Wastes to Resources, in order to Re-value Mining Liabilities in a Changing World.

Objective:

The global forum for exchanging knowledge and developing capacity to ensure that new mines are designed for compliance, and old sites are closed economically, whilst minimizing environmental and societal impacts.

Hosted by:

WITS: The University of the Witwatersrand, Johannesburg, South Africa.

Major Sponsor:

Technology & Human Resources for Industry Programme (THRIP) of the Department of Trade & Industry of South Africa (DTI) and the National Research Foundation of South Africa (NRF)

Founding Body:

Australian Centre for Geomechanics (ACG)

Collaborating Organisation:

Cranfield University, United Kingdom



THANKS!



321go.MP4

