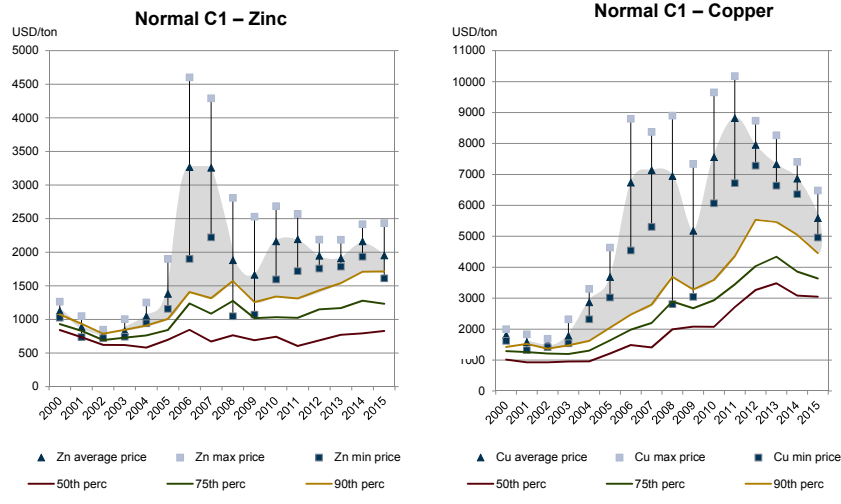


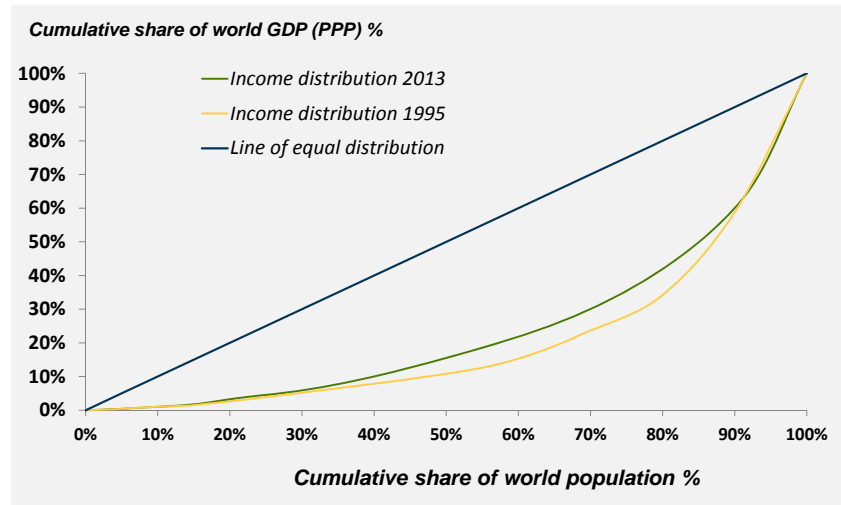
Jobbigt



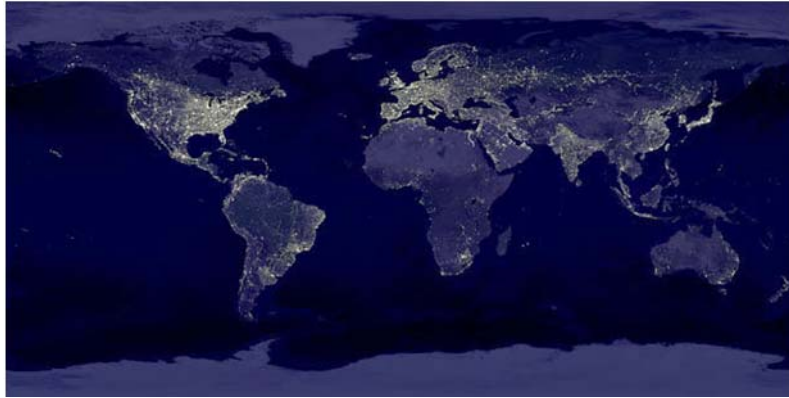
Source: Wood Mackenzie Q3 2015, Reuters Datastream



Rättvisa



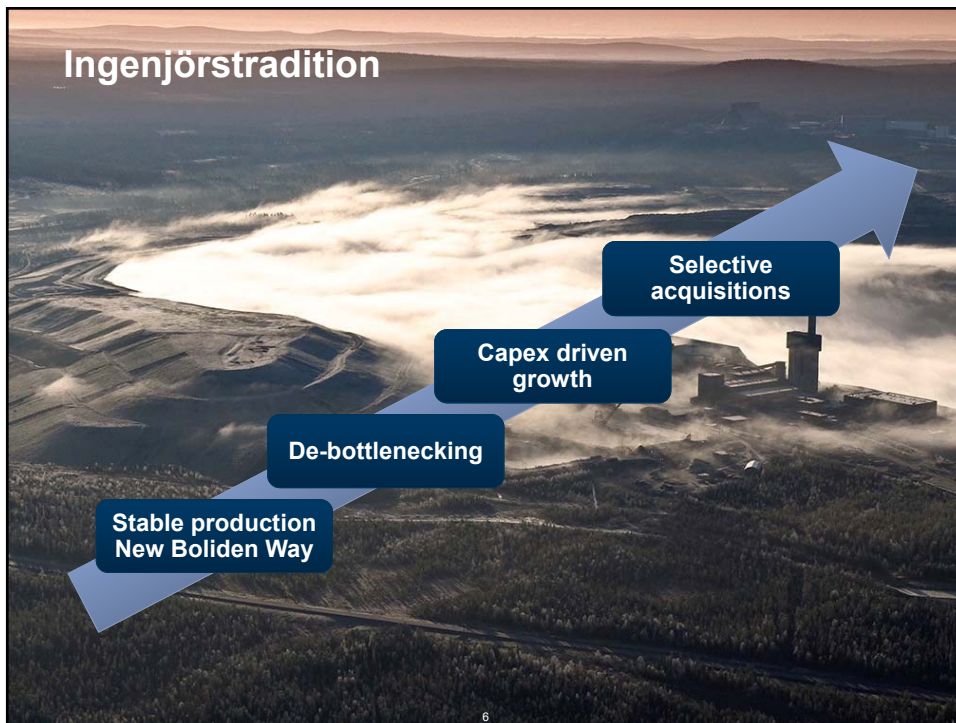
Natt



BOLIDEN

5

Ingenjörstradition



6

Kluster



7

Projektledare



Projektleverans

	On time	On budget	Capex, BSEK
Aitik	√		~6.2
Rönnskär	√	√	~1.3
Kankberg	√	√	~1.0
Garpenberg	√	√	~3.9



Produktivitet

	Percentile
Grade	99
Yield	90
Net yield grade*	99

Productivity:

Mine	2
Mill	0
Total	0
Wage rate	88
Labour cost	6

Energy:

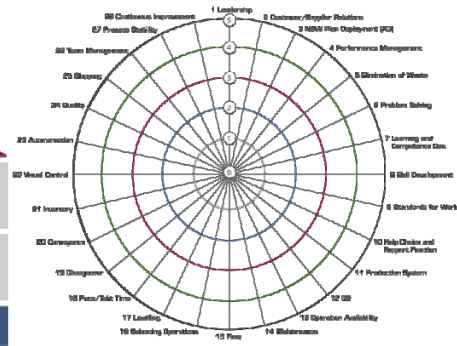
Electricity price	3
Energy cost	0

Cost to concentrate	40
Freight	30
Realization (TC, freight)	1
Normal C1	19

* Including ranking of Net revenue, i.e. including by-products

BOLIDEN

Ledarskap



WHO WE ARE

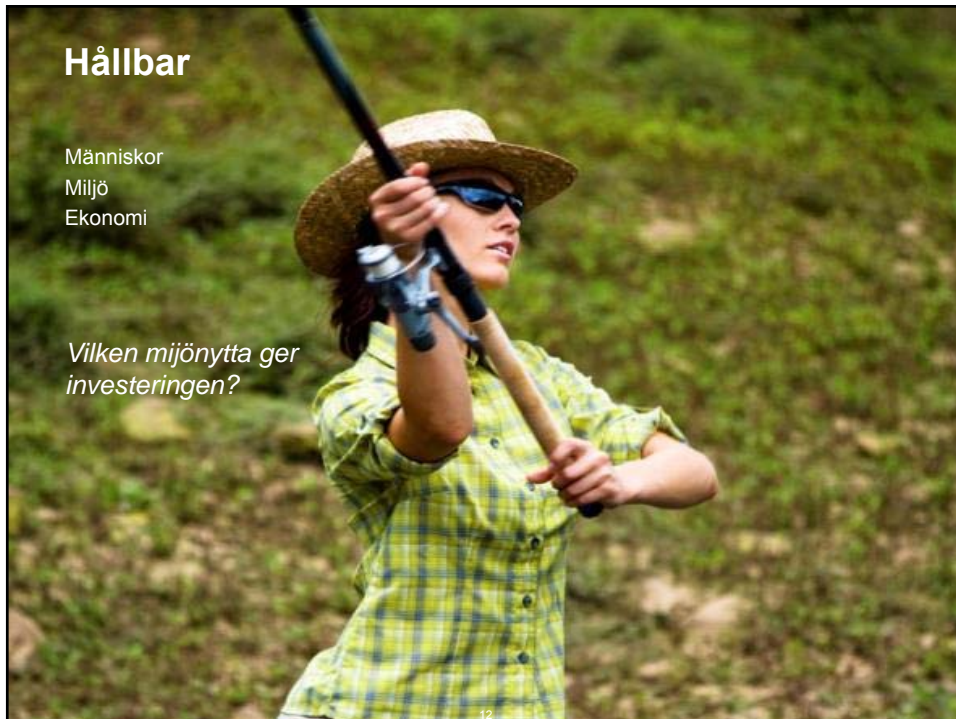
HOW WE DO IT



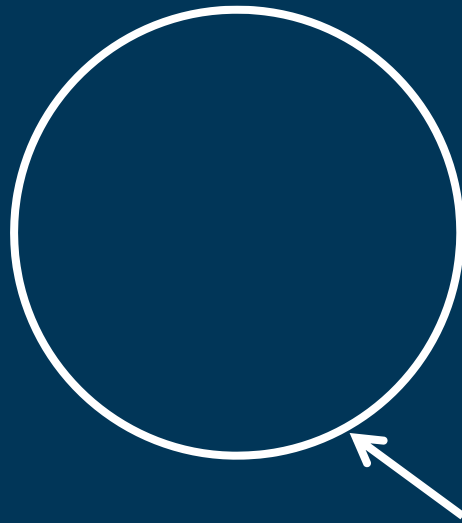
Hållbar

Människor
Miljö
Ekonomi

Vilken miljönnytta ger investeringen?



Cirkel



Vacker



