

Occupational Injuries and Sick Leave in the Swedish Mining and Mineral Industry 2012

Contents

1. Main Statistics of the Mining and Mineral Industry	2
2. Scope of the Statistics.....	2
Occupational Injuries	2
Sick Leave.....	2
3. Definitions	3
4. Sick Leave 2010-2012.....	4
5. Occupational Injuries in the Mining and Mineral Industry 2003-2012.....	4
Number of Working Hours.....	4
Number of Employees	4
Lost Day Injury Frequency Rate	5
Days of Sick Leave per Injury.....	6
6. Occupational Injuries - Severe Accidents	7
Severe Accidents.....	7
Fatalities.....	8
7. Zero Injury Cases and Near Misses	8
8. Occupational Diseases	10
9. Commuting Accidents.....	11
10. Accidents of Contractors Working for Mining Companies	11

1. Main Statistics of the Mining and Mineral Industry

All employees (excl. contractors)	2012	2011
Total Number of Occupational Injuries	115	82
Lost Day Injury Frequency Rate, LDIFR (number of occupational injuries per one million working hours)	10.2	7.7
Number of Days of Sick Leave per Injury	9,9	19
Number of Fatalities	0	0
Occupational Diseases	30	35
Commuting Accidents	31	28
Number of Days of Sick Leave per Injury (commuting accidents)	4	5
All employees incl. contractors		
Number of Occupational Injuries	197	137
Lost Day Injury Frequency Rate, LDIFR	13.1	9.8
Contractors		
Total Number of Occupational Injuries	82	65
Lost Day Injury Frequency Rate, LDIFR	22.2	16.6
Number of Fatalities	0	1
Sick Leave		
Total Sick Leave (percentage of regular number of working hours)	3.2	3.0
Short term sick leave (\leq 14 days)	2.0	1.9
Long term sick leave (\geq 14 days)	1.2	1.1

2. Scope of the Statistics

Occupational Injuries

The following mining companies reported statistics on occupational injuries to SveMin: Boliden Mineral AB, LKAB, Zinkgruvan Mining AB, Björkdalsgruvan AB, Dannemora Mineral AB, Dragon Mining (Sweden) AB, Lovisagruvan AB, Cementa AB, Nordkalk AB and SMA Mineral AB.

The statistics on occupational injuries includes all employees on all levels (blue-collar and white-collar staff) of the mining and mineral companies listed above.

The number of occupational injuries and lost day injury frequency rate (LDIFR) for contractors are based on figures from the mining companies, as are the estimated working hours.

Sick Leave

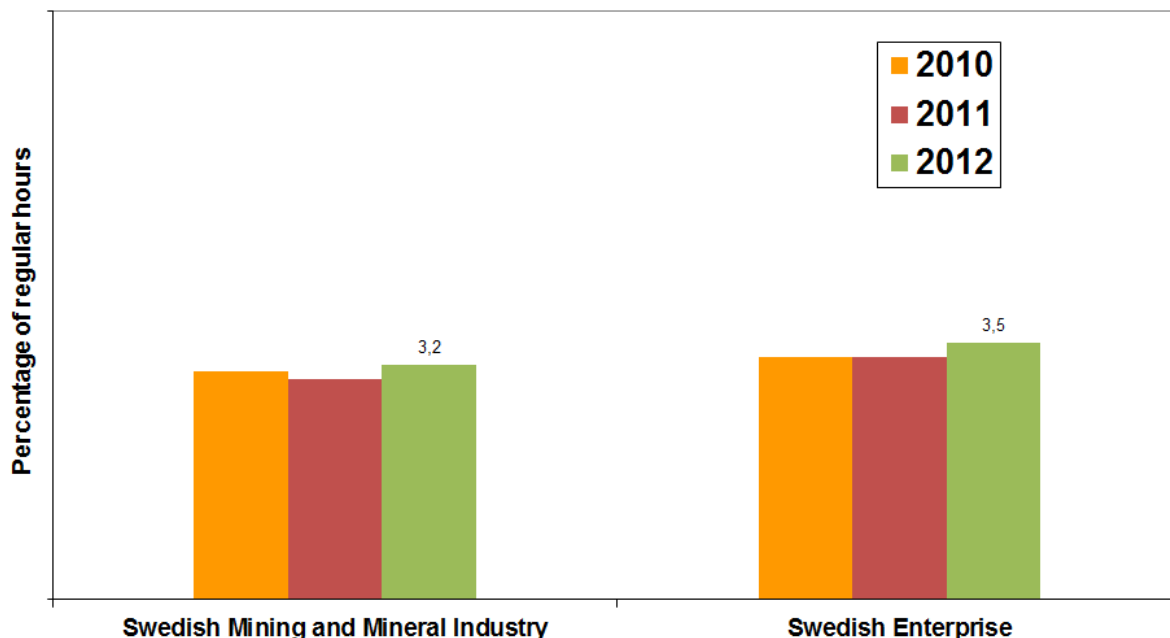
The statistics on sick leave include all employees. Contractors are not included.

3. Definitions

Lost Day Case	A sudden unforeseen incident leading to personal injury resulting in at least one day of sick leave.
Lost Day Injury Frequency Rate, LDIFR	Number of Lost Day Injuries per one million working hours.
Occupational Injury per 1, 000 employees	A frequency measure used in the official Swedish statistics by Statistics Sweden and the Working Environment Authority. (It may, however, be rather difficult to obtain information on the number of full-time employees.)
Severe Accident	Accident resulting in a fatality, disability or at least 30 days sick leave.
Occupational Diseases	Number of occupational diseases reported to the Social Insurance Agency.
Commuting Accident	Traffic accident on way to and/or from work.
Zero Injury Case	Accident at work resulting in an injury, but <u>not</u> in absence from work.
Near Misses	Accidents not resulting in any injury, but which could have.
Total Sick Leave	Includes all sick leave periods as a percentage (%) of the regular working hours.
Regular Working Hours	Regular working hours consist of working hours according to the contract of employment (hours worked + sick leave + leave of absence) <i>and</i> vacation. Overtime is not included in the regular working hours. This definition is also used in the Time Allocation Survey of the Confederation of Swedish Enterprise.

4. Sick Leave 2010-2012

Total Sick Leave 2010-2012 (all employees)



5. Occupational Injuries in the Mining and Mineral Industry 2003-2012

Number of Working Hours

The working hours reported include the working hours of supervisors and blue-collar and white-collar staff. The working hours of contractors are not included in the following tables.

Number of Employees

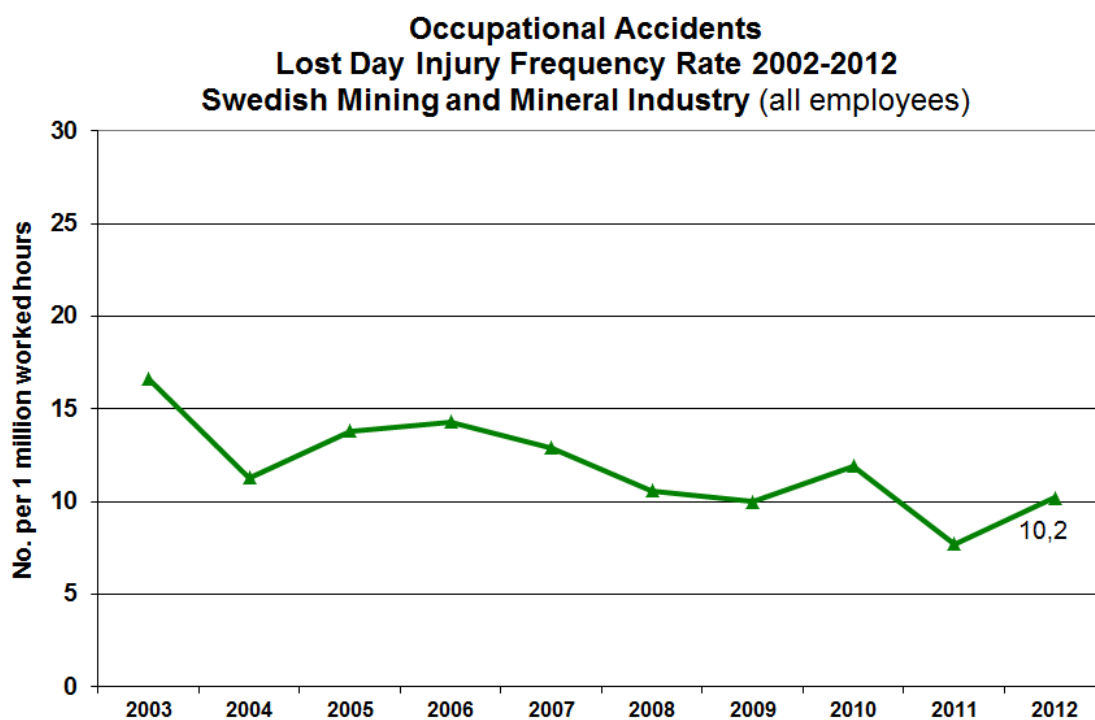
The number of employees has been calculated to represent the number of full-time, whole-year employees.

The figures in the tables do not include contractors. For contractors see chapter 10.

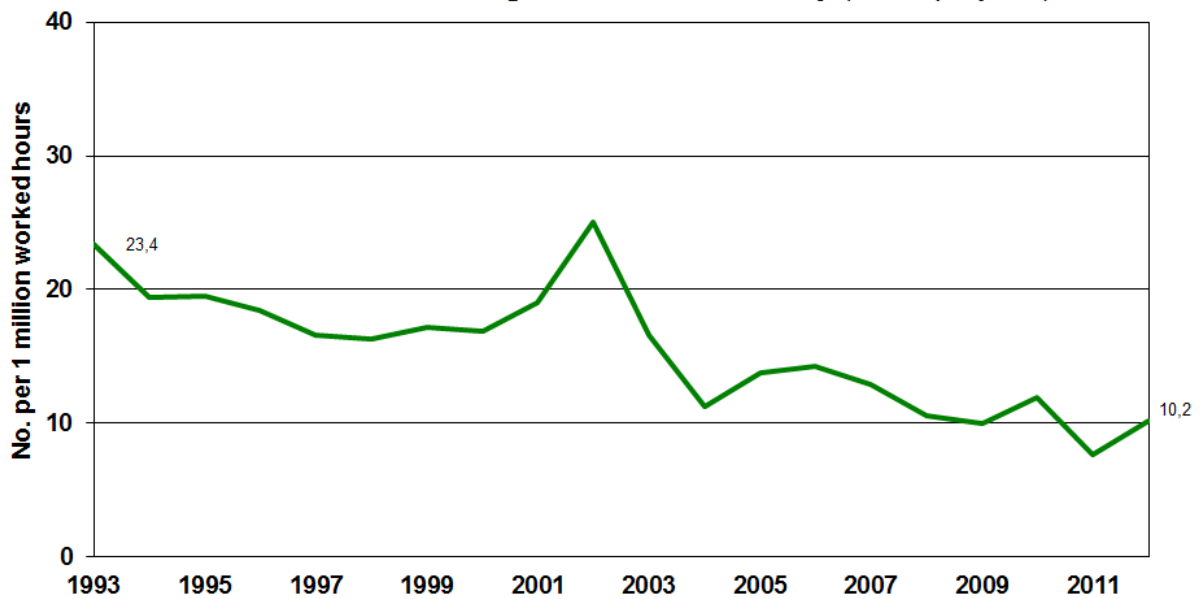
Total 2003-2012. Employees, working hours, lost day injuries, frequency, days of sick leave.

Year	Number of employees	Working hours	Number of lost day injuries	Lost day injury frequency rate	Lost day injuries per 1,000 employees	Number of days of sick leave	Days of sick leave per injury
2003	4 753	7 598 857	126	16.6	27	2 859	22.7
2004	4 933	7 888 132	89	11.3	18	1 629	18.3
2005	5 156	8 183 606	113	13,8	21	1 577	14,0
2006	5 482	8 836 215	126	14.3	23	2 359	18.9
2007	5 771	9 085 587	117	12.9	20	2 025	17.3
2008	5 351	9 402 873	100	10.6	19	1 854	18.5
2009	6 264	8 974 503	90	10.0	14	1 483	16.7
2010	6 260	10 017 155	119	11.9	19	1 644	13.8
2011	6 216	10 633 032	82	7.7	13	1 560	19.0
2012	6 342	11 321 237	115	10.2	18	1 136	9.9

Lost Day Injury Frequency Rate

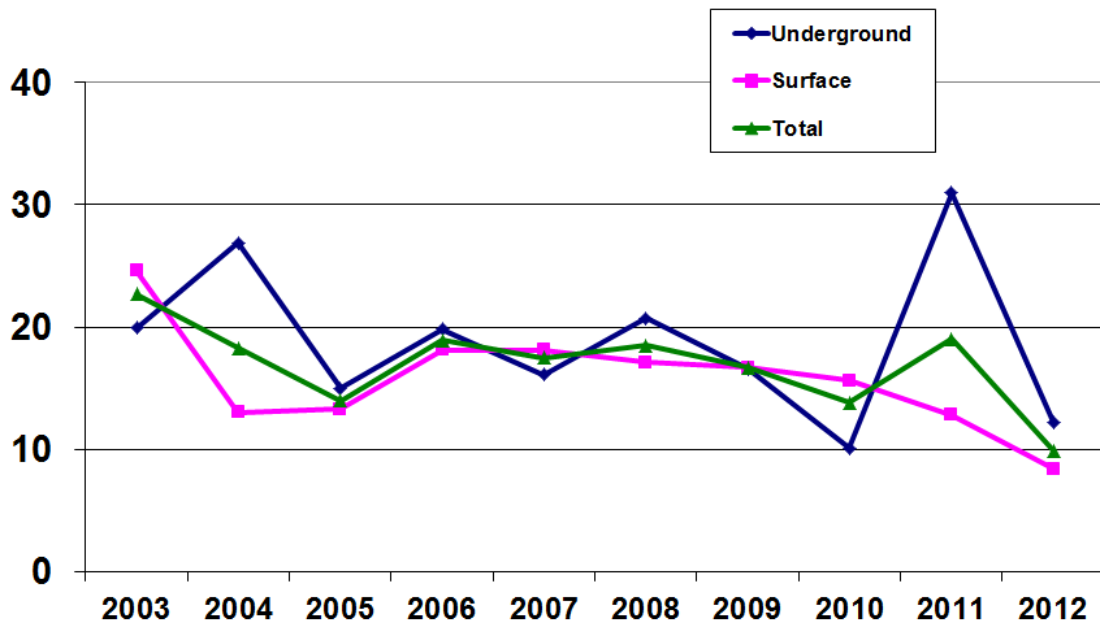


**Occupational Accidents
Lost Day Injury Frequency Rate 1993-2012
Swedish Mining and Mineral Industry (all employees)**



Days of Sick Leave per Injury

**Days of Sick Leave per Injury 2003-2012
(all employees)**



6. Occupational Injuries - Severe Accidents

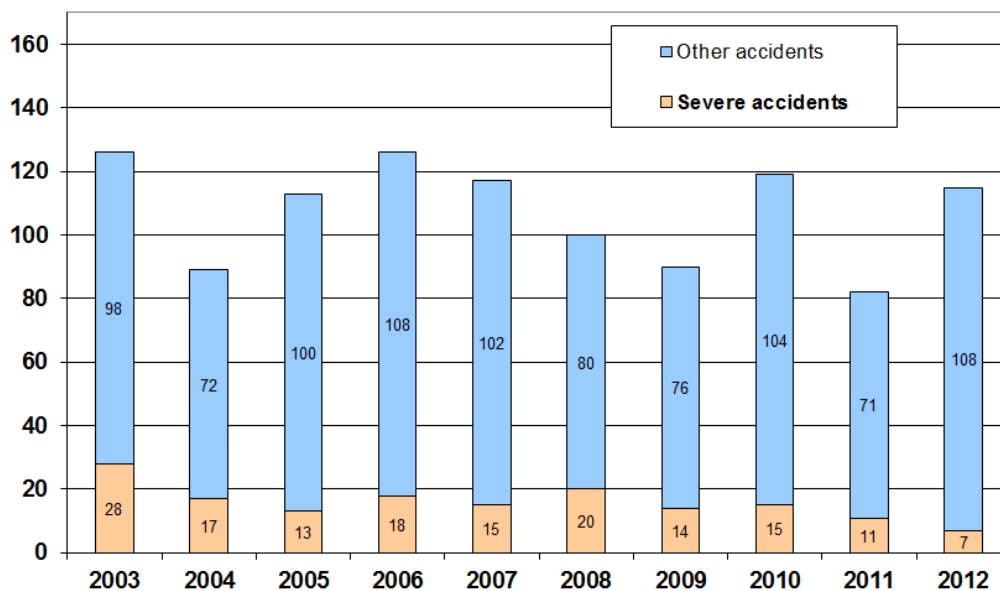
Severe accident = accident resulting in a fatality, disability or at least 30 days sick leave.

Severe Accidents

Severe accidents compared to the total number of accidents 2003-2012

	LOST DAY CASES	SEVERE ACCIDENTS	PER CENT	SEVERE ACCIDENTS	
	Total			Underground	Surface
2003	126	28	22.2	9	19
2004	89	17	19.1	10	7
2005	113	13	11,5	8	5
2006	126	18	14.3	10	8
2007	117	15	12.8	5	10
2008	100	20	20.0	8	12
2009	90	14	15.6	7	7
2010	119	15	12.6	4	11
2011	82	11	13.4	5	6
2012	115	7	6.0	4	3

Severe Accidents 2003 - 2012



Type of activities during which severe occupational injuries occur

Type of activity/injury	No. of Accidents				
	2012	2011	2010	2009	2008
Scaling	0	0	0	0	0
Falling rock	0	1	1	0	2
Walking, jumping, sliding/slipping	1	5	3	1	7
Service and maintenance	4	2	6	6	10
Traffic	0	2	0	1	1
Blasting gas	0	0	0	0	0
Squeeze injuries	1	0	5	4	0
Miscellaneous	1	1	0	1	0
Total	7	11	15	13	20

Fatalities

The Swedish mining industry has had few occupational accidents with fatal outcome during the last 15 years.

The figures below do not include contractors. For contractor, see chapter 10.

Number of fatalities 2003-2012

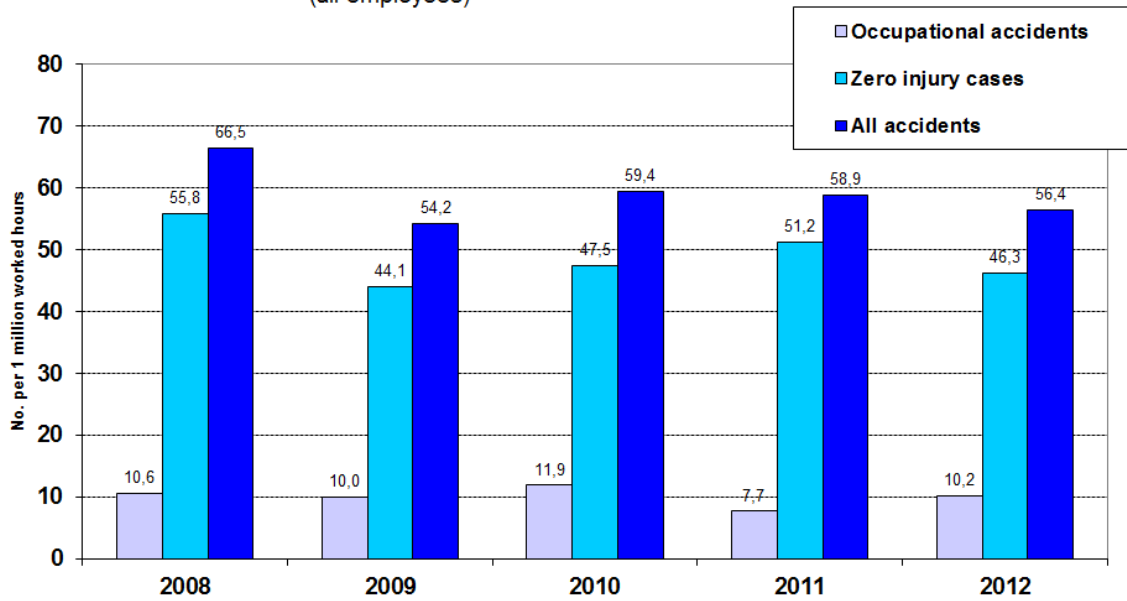
Year	2012	2011	2010	2009	2008	2007	2006	2005	2004	2003
No.	0	0	0	1	0	1	1	0	0	0

7. Zero Injury Cases and Near Misses

Figures for 2012:

	Number	Frequency
Occupational accidents (lost day cases)	115	10.2
Zero injury cases	524	46.3
All accidents	639	56.4
Near misses	2 572	227.2

Comparison Frequency Rates 2008-2012 (all employees)



Comparison Frequency Rate Occupational Accidents and Near Misses 2009-2012 (all employees)



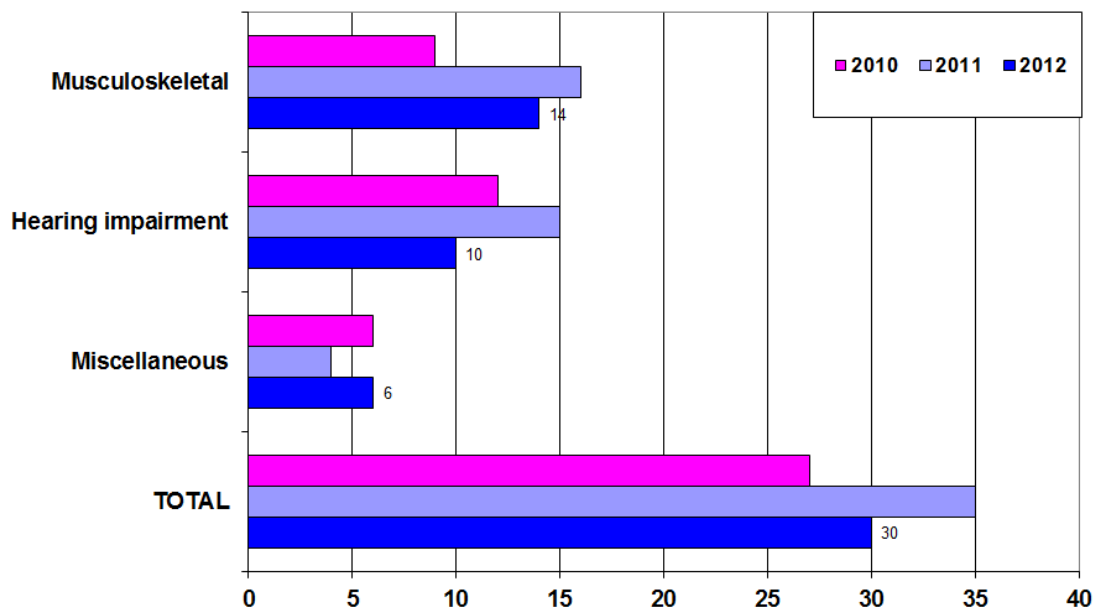
8. Occupational Diseases

The table below shows the number of occupational diseases reported to the Social Insurance Agency.

	2012	2011	2010
Musculoskeletal disorder	14	16	9
Hearing impairment	10	15	12
Miscellaneous	6	4	6
TOTAL	30	35	27

Year	Frequency rate, Occupational diseases per 1,000 employees
2012	4.7
2011	5.6
2010	4.3

Occupational Diseases 2010-2012



9. Commuting Accidents

Commuting accidents are traffic accidents occurring on the way to and from work. As a consequence, these accidents do not directly involve work and work assignments. Nevertheless, commuting accidents are included in the social insurance system and entitle to financial compensation, etc.

2012	31 commuting accidents	4 days of absence from work on average
2011	28 commuting accidents	5 days of absence from work on average
2010	13 commuting accidents	16 days of absence from work on average

10. Accidents of Contractors Working for Mining Companies

Number of	2012	2011	2010	2009
Lost day cases	82	65	58	46
Fatalities	0	1	2	0