

Occupational Injuries and Sick Leave in the Swedish Mining and Mineral Industry 2013

Contents

| | |
|---|----|
| 1. Main Statistics of the Mining and Mineral Industry | 2 |
| 2. Scope of the Statistics..... | 2 |
| 3. Definitions | 3 |
| 4. Sick Leave..... | 4 |
| 5. Occupational Injuries in the Mining and Mineral Industry | 4 |
| Number of Working Hours..... | 4 |
| Number of Employees | 4 |
| Lost Day Injury Frequency Rate | 5 |
| Days of Sick Leave per Injury..... | 7 |
| 6. Occupational Injuries - Severe Accidents..... | 7 |
| Severe Accidents..... | 8 |
| Fatalities..... | 8 |
| 7. Zero Injury Cases and Near Misses | 9 |
| 8. Occupational Diseases | 10 |
| 9. Commuting Accidents..... | 11 |
| 10. Accidents of Contractors Working for Mining Companies | 11 |

1. Main Statistics of the Mining and Mineral Industry

| | | |
|---|-------------|-------------|
| All employees (excl. contractors) | 2013 | 2012 |
| Total Number of Occupational Injuries | 95 | 115 |
| Lost Day Injury Frequency Rate, LDIFR (number of occupational injuries per one million working hours) | 7.9 | 10.2 |
| Number of Days of Sick Leave per Injury | 12.0 | 9.9 |
| Number of Fatalities | 0 | 0 |
| Occupational Diseases | 40 | 30 |
| Commuting Accidents | 33 | 31 |
| Number of Days of Sick Leave per Injury (commuting accidents) | | 4 |
| All employees incl. contractors | | |
| Number of Occupational Injuries | 180 | 197 |
| Lost Day Injury Frequency Rate, LDIFR | 8.1 | 13.1 |
| Contractors | | |
| Total Number of Occupational Injuries | 86 | 82 |
| Lost Day Injury Frequency Rate, LDIFR | 8.3 | 22.2 |
| Number of Fatalities | 0 | 0 |
| Sick Leave | | |
| Total Sick Leave (percentage of regular number of working hours) | 3.3 | 3.2 |
| Short term sick leave (\leq 14 days) | 2.0 | 2.0 |
| Long term sick leave (\geq 14 days) | 1.3 | 1.2 |

2. Scope of the Statistics

Occupational Injuries

The following mining companies reported statistics on occupational injuries to SveMin: Boliden Mineral AB, LKAB, Zinkgruvan Mining AB, Björkdalsgruvan AB, Dannemora Mineral AB, Dragon Mining (Sweden) AB, Lovisagruvan AB, Northland Resources AB, Cementa AB, Nordkalk AB and SMA Mineral AB.

The statistics on occupational injuries includes all employees on all levels (blue-collar and white-collar staff) of the mining and mineral companies listed above.

The number of occupational injuries and lost day injury frequency rate (LDIFR) for contractors are based on figures from the mining companies, as are the estimated working hours.

Sick Leave

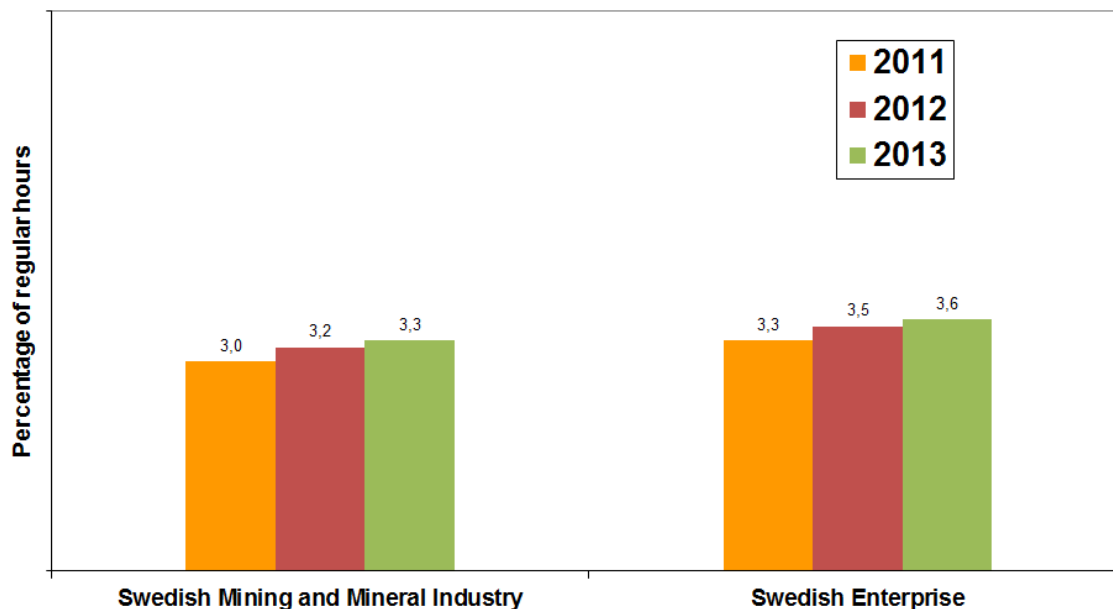
The statistics on sick leave include all employees. Contractors are not included.

3. Definitions

| | |
|--|--|
| Lost Day Case | A sudden unforeseen incident leading to personal injury resulting in at least one day of sick leave. |
| Lost Day Injury Frequency Rate, LDIFR | Number of Lost Day Injuries per one million working hours. |
| Occupational Injury per 1, 000 employees | A frequency measure used in the official Swedish statistics by Statistics Sweden and the Working Environment Authority. (It may, however, be rather difficult to obtain information on the number of full-time employees.) |
| Severe Accident | Accident resulting in a fatality, disability or at least 30 days sick leave. |
| Occupational Diseases | Number of occupational diseases reported to the Social Insurance Agency. |
| Commuting Accident | Traffic accident on way to and/or from work. |
| Zero Injury Case | Accident at work resulting in an injury, but <u>not</u> in absence from work. |
| Near Misses | Accidents not resulting in any injury, but which could have. |
| Total Sick Leave | Includes all sick leave periods as a percentage (%) of the regular working hours. |
| Regular Working Hours | Regular working hours consist of working hours according to the contract of employment (hours worked + sick leave + leave of absence) <i>and</i> vacation. Overtime is not included in the regular working hours. This definition is also used in the Time Allocation Survey of the Confederation of Swedish Enterprise. |

4. Sick Leave 2011-2013

Total Sick Leave 2011-2013 (all employees)



5. Occupational Injuries in the Mining and Mineral Industry 2004-2013

Number of Working Hours

The working hours reported include the working hours of supervisors and blue-collar and white-collar staff. The working hours of contractors are not included in the following tables.

Number of Employees

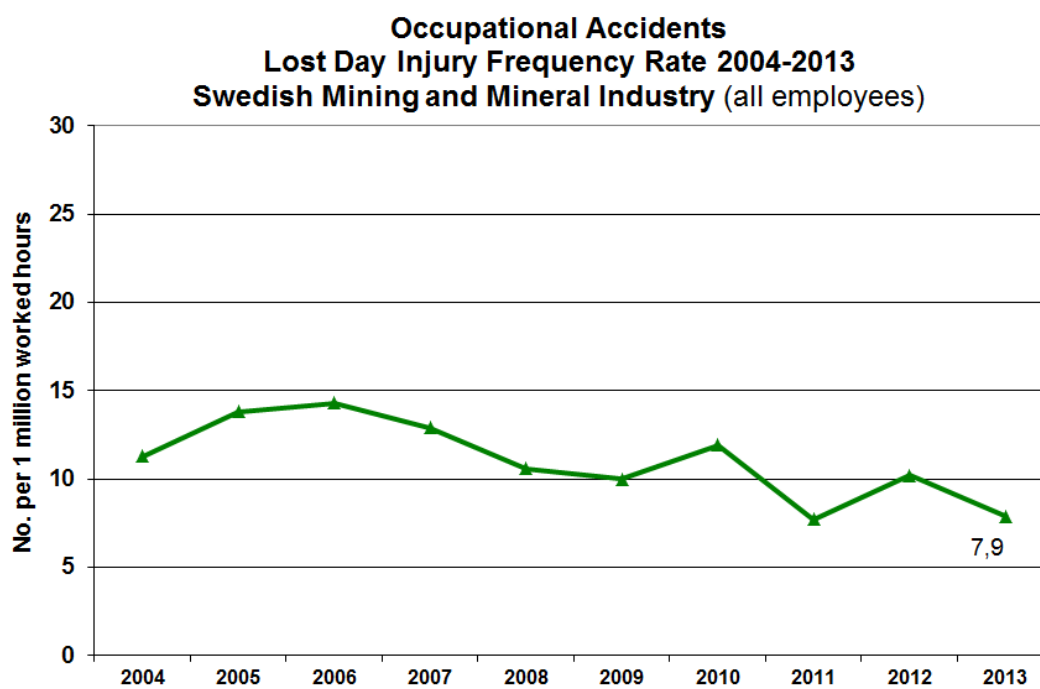
The number of employees has been calculated to represent the number of full-time, whole-year employees.

The figures in the tables do not include contractors. For contractors see chapter 10.

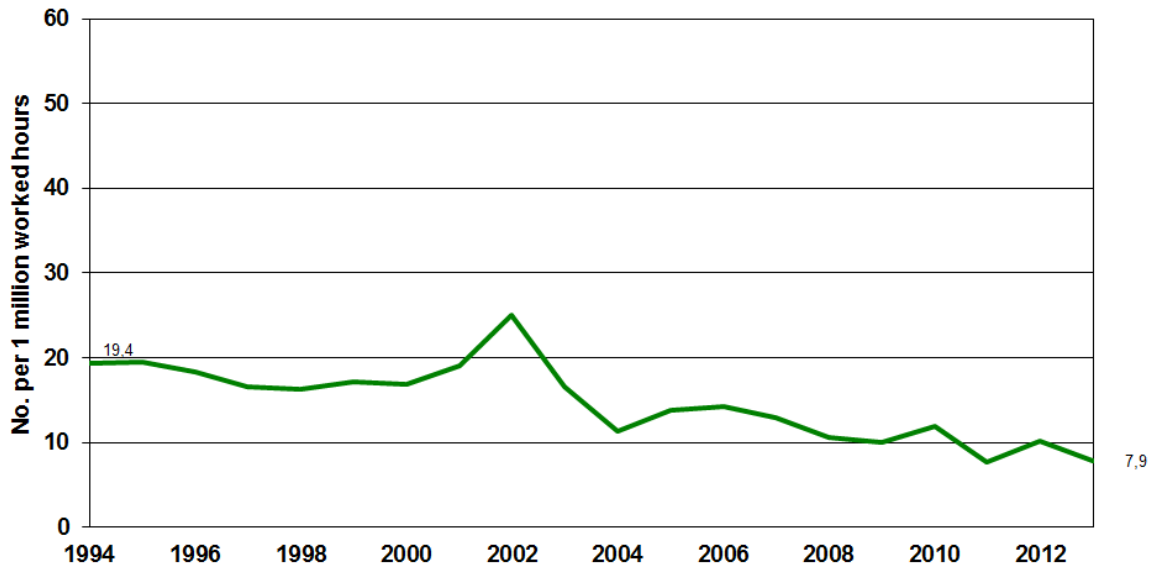
Total 2004-2013. Employees, working hours, lost day injuries, frequency, days of sick leave.

| Year | Number of employees | Working hours | Number of lost day injuries | Lost day injury frequency rate | Lost day injuries per 1,000 employees | Number of days of sick leave | Days of sick leave per injury |
|------|---------------------|---------------|-----------------------------|--------------------------------|---------------------------------------|------------------------------|-------------------------------|
| 2004 | 4 933 | 7 888 132 | 89 | 11.3 | 18 | 1 629 | 18.3 |
| 2005 | 5 156 | 8 183 606 | 113 | 13,8 | 21 | 1 577 | 14,0 |
| 2006 | 5 482 | 8 836 215 | 126 | 14.3 | 23 | 2 359 | 18.9 |
| 2007 | 5 771 | 9 085 587 | 117 | 12.9 | 20 | 2 025 | 17.3 |
| 2008 | 5 351 | 9 402 873 | 100 | 10.6 | 19 | 1 854 | 18.5 |
| 2009 | 6 264 | 8 974 503 | 90 | 10.0 | 14 | 1 483 | 16.7 |
| 2010 | 6 260 | 10 017 155 | 119 | 11.9 | 19 | 1 644 | 13.8 |
| 2011 | 6 216 | 10 633 032 | 82 | 7.7 | 13 | 1 560 | 19.0 |
| 2012 | 6 342 | 11 321 237 | 115 | 10.2 | 18 | 1 136 | 9.9 |
| 2013 | 7 849 | 12 072 100 | 95 | 7.9 | 12 | 1 144 | 12.0 |

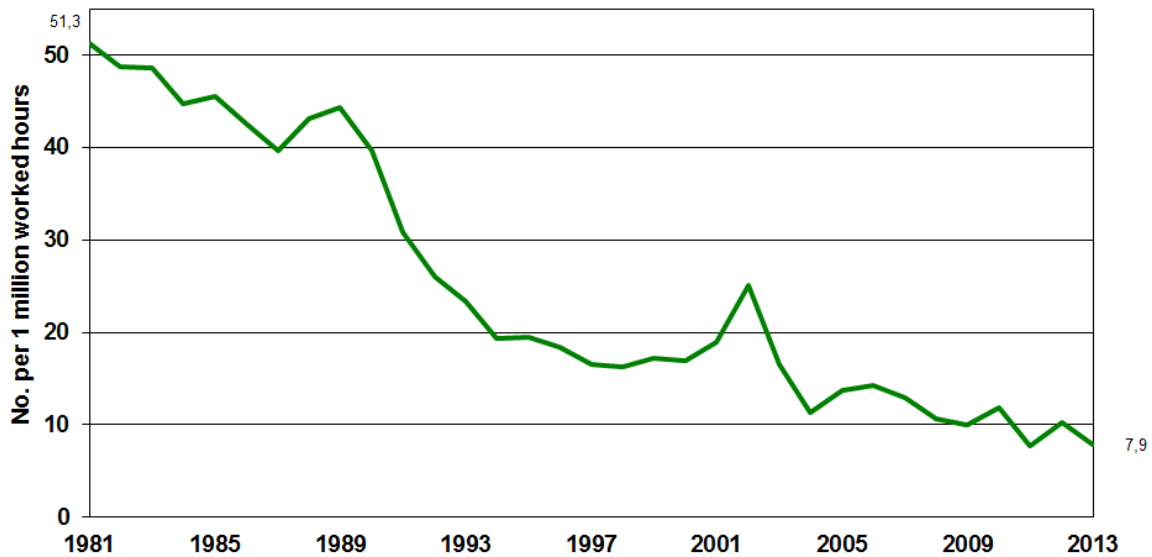
Lost Day Injury Frequency Rate



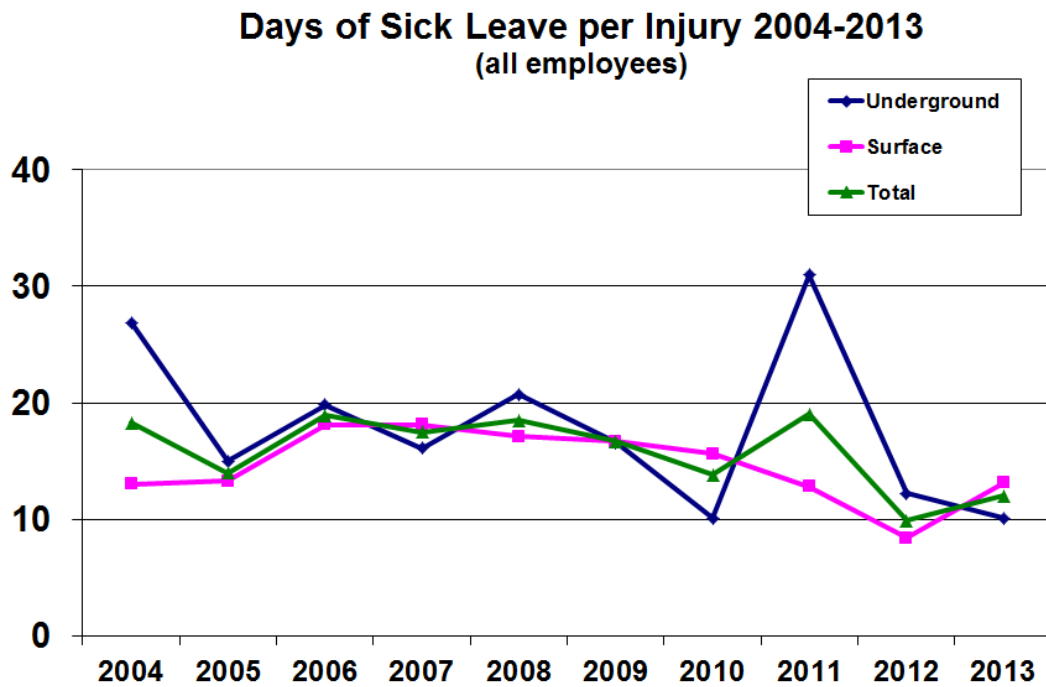
Occupational Accidents
Lost Day Injury Frequency Rate 1994-2013
Swedish Mining and Mineral Industry (all employees)



Occupational Accidents
Lost Day Injury Frequency Rate 1981-2013
Swedish Mining and Mineral Industry (all employees)



Days of Sick Leave per Injury



6. Occupational Injuries - Severe Accidents

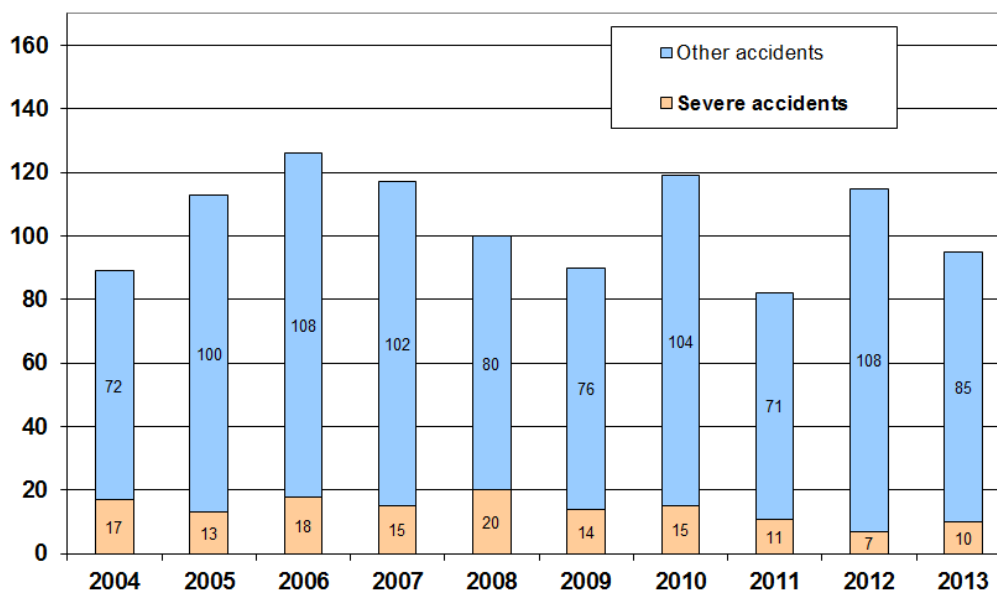
Severe accident = accident resulting in a fatality, disability or at least 30 days sick leave.

Severe Accidents

Severe accidents compared to the total number of accidents 2004-2013

| | LOST DAY CASES | SEVERE ACCIDENTS | PER CENT | SEVERE ACCIDENTS | |
|------|----------------|------------------|----------|------------------|---------|
| | | | | Underground | Surface |
| | Total | | | | |
| 2004 | 89 | 17 | 19.1 | 10 | 7 |
| 2005 | 113 | 13 | 11.5 | 8 | 5 |
| 2006 | 126 | 18 | 14.3 | 10 | 8 |
| 2007 | 117 | 15 | 12.8 | 5 | 10 |
| 2008 | 100 | 20 | 20.0 | 8 | 12 |
| 2009 | 90 | 14 | 15.6 | 7 | 7 |
| 2010 | 119 | 15 | 12.6 | 4 | 11 |
| 2011 | 82 | 11 | 13.4 | 5 | 6 |
| 2012 | 115 | 7 | 6.0 | 4 | 3 |
| 2013 | 95 | 10 | 10.5 | 2 | 8 |

Severe Accidents 2004 - 2013



Type of activities during which severe occupational injuries occur

| Type of activity/injury | No. of Accidents | | | | |
|------------------------------------|------------------|----------|-----------|-----------|-----------|
| | 2013 | 2012 | 2011 | 2010 | 2009 |
| Scaling | 0 | 0 | 0 | 0 | 0 |
| Falling rock | 0 | 0 | 1 | 1 | 0 |
| Walking, jumping, sliding/slipping | 2 | 1 | 5 | 3 | 1 |
| Service and maintenance | 1 | 4 | 2 | 6 | 6 |
| Traffic | 0 | 0 | 2 | 0 | 1 |
| Blasting gas | 0 | 0 | 0 | 0 | 0 |
| Squeeze injuries | 5 | 1 | 0 | 5 | 4 |
| Miscellaneous | 2 | 1 | 1 | 0 | 1 |
| Total | 10 | 7 | 11 | 15 | 13 |

Fatalities

The Swedish mining industry has had few occupational accidents with fatal outcome during the last 20 years.

The figures below do not include contractors. For contractor, see chapter 10.

Number of fatalities 2003-2012

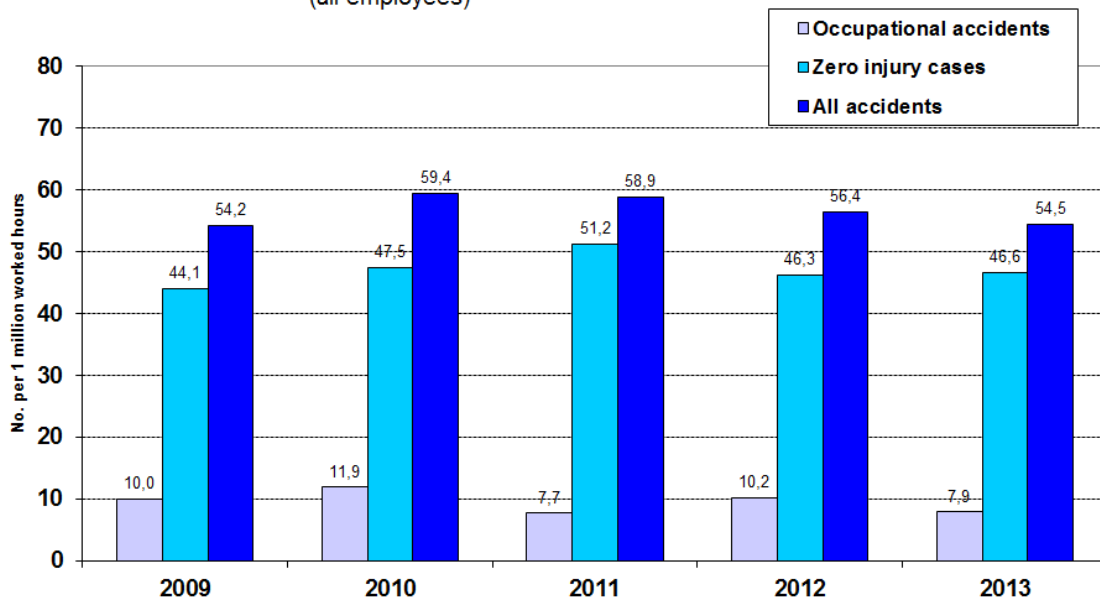
| Year | 2013 | 2012 | 2011 | 2010 | 2009 | 2008 | 2007 | 2006 | 2005 | 2004 |
|------|------|------|------|------|------|------|------|------|------|------|
| No. | 0 | 0 | 0 | 0 | 1 | 0 | 1 | 1 | 0 | 0 |

7. Zero Injury Cases and Near Misses

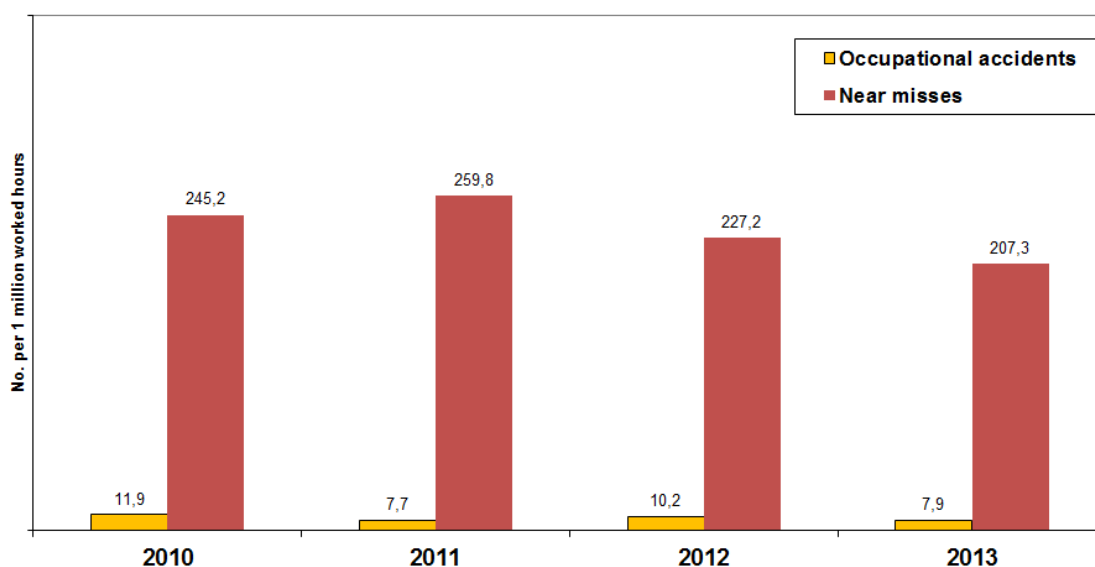
Figures for 2013:

| | Number | Frequency |
|---|--------|-----------|
| Occupational accidents (lost day cases) | 95 | 7.9 |
| Zero injury cases | 563 | 46.6 |
| All accidents | 658 | 54.5 |
| Near misses | 2 503 | 207.3 |

**Comparison Frequency Rates
2009-2013**
(all employees)



**Comparison Frequency Rate
Occupational Accidents and Near Misses 2010-2013**
(all employees)



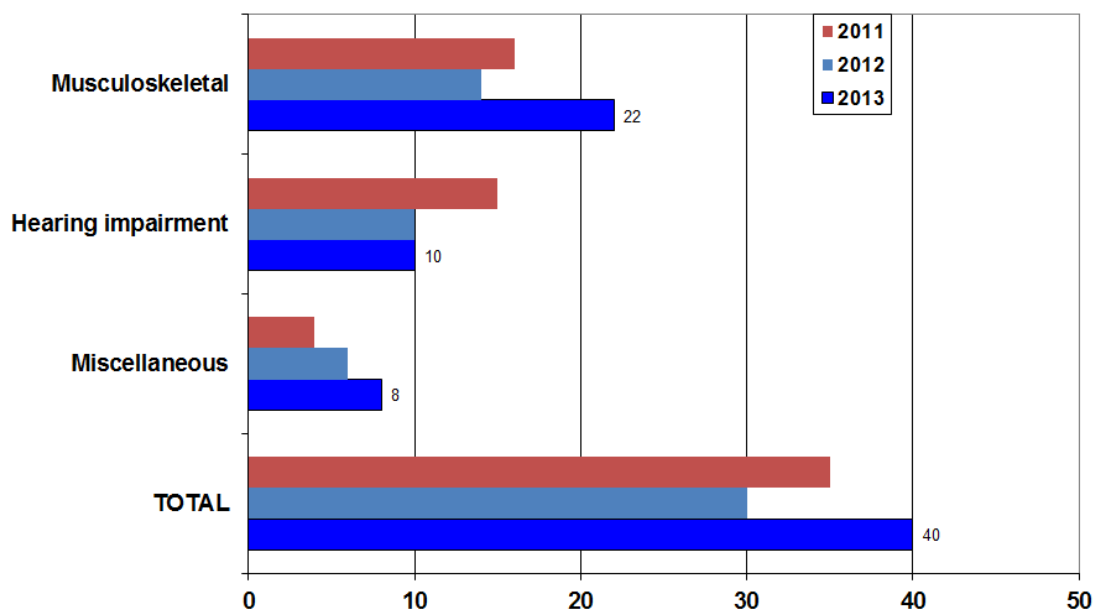
8. Occupational Diseases

The table below shows the number of occupational diseases reported to the Social Insurance Agency.

| | 2013 | 2012 | 2011 |
|--------------------------|-----------|-----------|-----------|
| Musculoskeletal disorder | 22 | 14 | 16 |
| Hearing impairment | 10 | 10 | 15 |
| Miscellaneous | 8 | 6 | 4 |
| TOTAL | 40 | 30 | 35 |

| Year | Frequency rate, Occupational diseases per 1,000 employees |
|------|---|
| 2013 | 5.1 |
| 2012 | 4.7 |
| 2011 | 5.6 |

Occupational Diseases 2011-2013



9. Commuting Accidents

Commuting accidents are traffic accidents occurring on the way to and from work. As a consequence, these accidents do not directly involve work and work assignments. Nevertheless, commuting accidents are included in the social insurance system and entitle to financial compensation, etc.

| | | |
|------|------------------------|--|
| 2013 | 33 commuting accidents | No figures on days of absence |
| 2012 | 31 commuting accidents | 4 days of absence from work on average |
| 2011 | 28 commuting accidents | 5 days of absence from work on average |

10. Accidents of Contractors Working for Mining Companies

| Number of | 2013 | 2012 | 2011 | 2010 |
|----------------|------|------|------|------|
| Lost day cases | 86 | 82 | 65 | 58 |
| Fatalities | 0 | 0 | 1 | 2 |